

84PowerPoint 59Presentations: 35Breaking 56Bad

Michael G. Prais, Ph.D.
Instructional and Communication Technologies
Consultant and Trainer
<http://michaelprais.me>
michael@michaelprais.me

Michael G. Prais, Ph.D.

SLATE

21 October 2015

How Do You Engage Your Students?

- A. Your Commanding Presence?
- B. Your Knowledge?
- C. Your Accessibility?
- D. Your Enthusiasm?
- E. Your Humor?

Michael G. Prais, Ph.D.

SLATE

21 October 2015

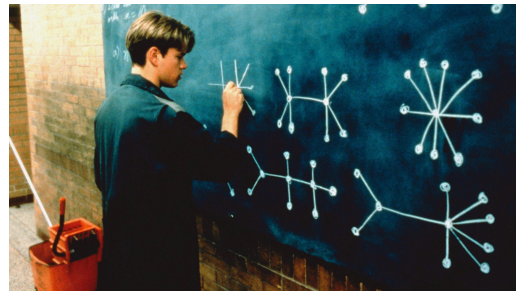


Your Commanding Presence

Michael G. Prais, Ph.D.

SLATE

21 October 2015



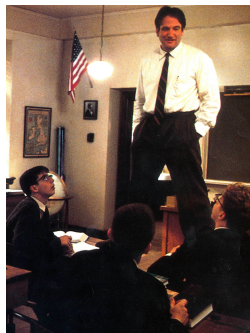
Your Knowledge

Michael G. Prais, Ph.D.

SLATE

21 October 2015

Your Accessibility



Michael G. Prais, Ph.D.

SLATE

21 October 2015

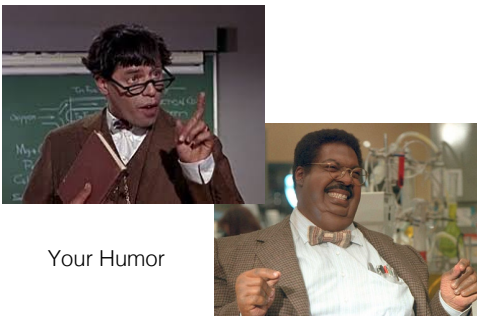


Your Enthusiasm

Michael G. Prais, Ph.D.

SLATE

21 October 2015



Your Humor

Michael G. Prais, Ph.D. SLATE 21 October 2015

What do you do when you want to get your students' attention?

- A. Speak Louder?
- B. Play Music?
- C. Show Videos?
- D. Collect Mobile Phones?
- E. Use PowerPoint?



Michael G. Prais, Ph.D. SLATE 21 October 2015

What works for you?


- A. Slides full of text?
- B. Slides full of equations?
- C. Slides copied from a classic text?
- D. Slides copied from the text book?
- E. Other types of slides?

Michael G. Prais, Ph.D. SLATE 21 October 2015

How long does it take to view a packed slide?

How long does it take to view a good portrait?



How can you extend the viewing time of a slide?


Michael G. Prais, Ph.D. SLATE 21 October 2015

Professional presentations use graphics to get attention,
to give the audience something with which to connect,
 and lastly,
 to help them remember what you said.

Recognition, Connection, Retention

Recognition does not have to be with particular material:
 It can be with an attention-getting image.

Michael G. Prais, Ph.D. SLATE 21 October 2015



You might be in the same room,
 but all you have is *your slides* to make sure
 students *recognize and remember* what you say.

Michael G. Prais, Ph.D. SLATE 21 October 2015

What can you do?

Michael G. Prais, Ph.D.

SLATE

21 October 2015

Professional Presentations Engage with Graphics

- Anchor Presentations with Attractive Images.
- Use Placement to Draw Attention.
- Lines, Nodes, and Intersections to Retain Interest.
- Use Contrast to Identify and Emphasize Information.
- Let your student read the textbook--not your slides.

Michael G. Prais, Ph.D.

SLATE

21 October 2015

Teaching - Learning

Move Students from
the Concrete, Observed, Experiential, and Inductive
to
the Abstract, Conceptual, Predictive, and Evaluative

Michael G. Prais, Ph.D.

SLATE

21 October 2015

Knowledge

Declarative (Concrete)
Conceptual (Abstract)
Procedural (Active)

Michael G. Prais, Ph.D.

SLATE

21 October 2015

Illustrations and
Annotated Images
are the most effective way to present
Conceptual (Abstract)
Material.

Michael G. Prais, Ph.D.

SLATE

21 October 2015

The best presentations
(TED) use graphics with
text labels to help
audiences recognize and
remember the concepts
—the abstract.

Michael G. Prais, Ph.D.

SLATE

21 October 2015

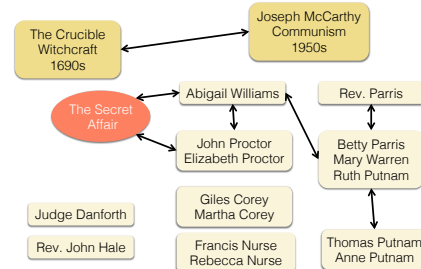
Tell a Story.
Generate Eye Movement to
Capture Attention.
What Can You Use to Draw the
Eye Through your Slide?

Michael G. Prais, Ph.D.

SLATE

21 October 2015

Concept (Mind) Maps



Michael G. Prais, Ph.D.

SLATE

21 October 2015

Keep your Viewer's
Attention

Michael G. Prais, Ph.D.

SLATE

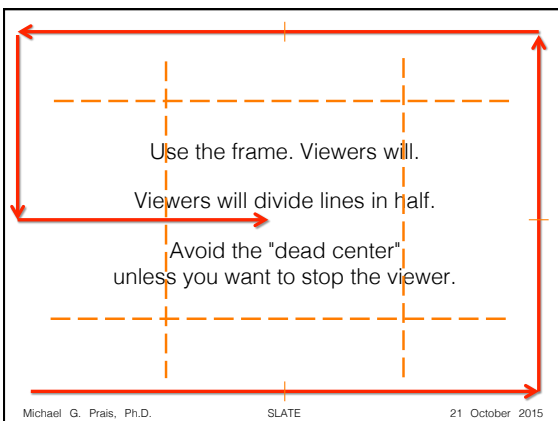
21 October 2015



Michael G. Prais, Ph.D.

SLATE

21 October 2015



Michael G. Prais, Ph.D.

SLATE

21 October 2015



Michael G. Prais, Ph.D.

SLATE

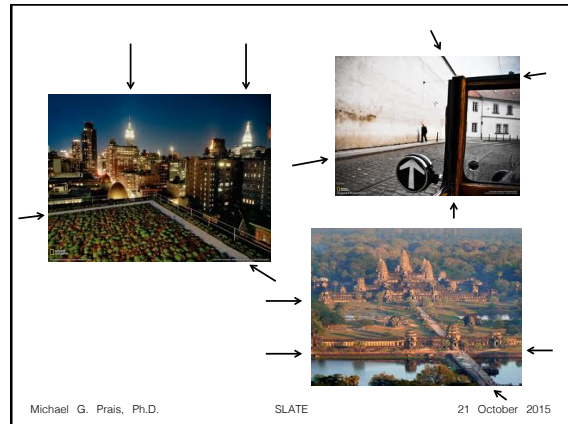
21 October 2015

- Interested (and obsessive) viewers will travel the frame.
- Viewers wait at the intersections of lines.
- The frame has intersections.
- Viewers will ponder a choice of directions.
- Lines crossing the frame draw the viewer into the frame earlier than expected.

Michael G. Prais, Ph.D.

SLATE

21 October 2015



Michael G. Prais, Ph.D.

SLATE

21 October 2015



- Lines and edges draw attention across time.
- Slope signals velocity.



Michael G. Prais, Ph.D.

SLATE

21 October 2015



- Arcs and curves encourage travel.
- The Sigmoid Curve



Michael G. Prais, Ph.D.

SLATE

21 October 2015



- Repetition and Symmetry garner attention.



Michael G. Prais, Ph.D.

SLATE

21 October 2015



- Creating connections produces pause.
- Viewers connect emphatic nodes into lines.



Michael G. Prais, Ph.D.

SLATE

21 October 2015

Control Your Viewer

- Use the Whole Frame: Thirds vs. Halves
- Lines, Edges, and Narrow Oblongs
- Arcs and Curves
- Intersections
- Repetition and Geometric Symmetry
- Allow Connecting the (Emphatic) Dots

Michael G. Prais, Ph.D.

SLATE

21 October 2015

Is your Information Important?

IS EVERYTHING EQUALLY
IMPORTANT?

Michael G. Prais, Ph.D.

SLATE

21 October 2015

You have to **D**ifferentiate.

Michael G. Prais, Ph.D.

SLATE

21 October 2015

How do you **D**ifferentiate
your information
on your slides?

Michael G. Prais, Ph.D.

SLATE

21 October 2015

Visual Contrast Creates Separation and Differential Identity

Use Differential Identity to Emphasize Importance.



Michael G. Prais, Ph.D.

SLATE

21 October 2015

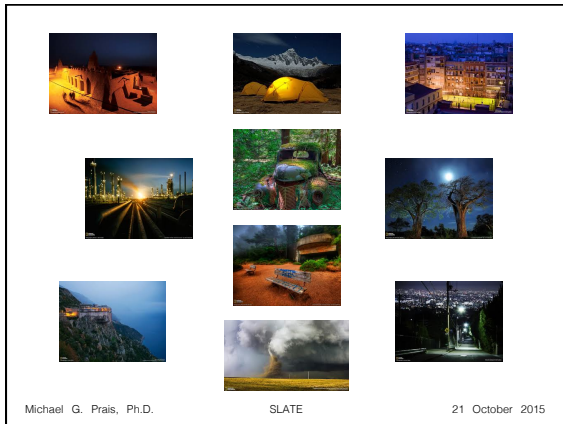
What is Important in the following Images?

- Contrast in Tone – Darkness and Lightness
- Contrast in Color – Hue and Saturation
- Light colors standout.
- Warm colors standout.
- Detail and Texture – Focus and Blur

Michael G. Prais, Ph.D.

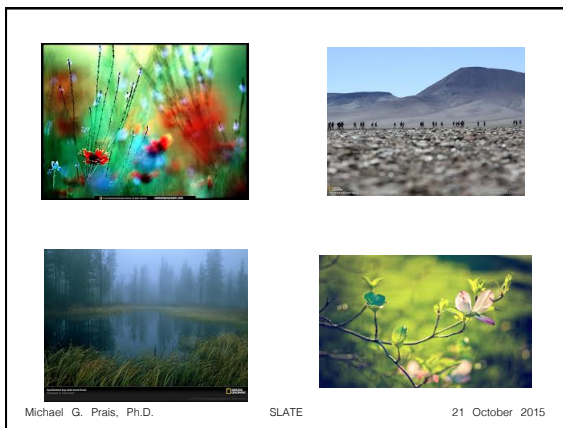
SLATE

21 October 2015



Visible detail
(**focus** in contrast to **blur**)
adds emphasis and
signals importance.

Michael G. Prais, Ph.D. SLATE 21 October 2015

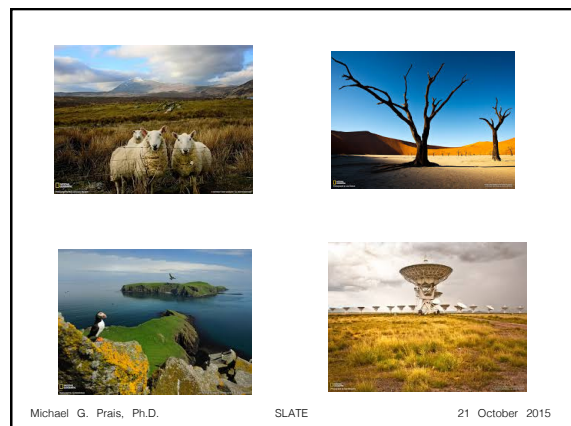


What Else Do You Use
to Emphasize
your Most Important
Information?

Michael G. Prais, Ph.D. SLATE 21 October 2015

What attracts your
attention
in the following images?

Michael G. Prais, Ph.D. SLATE 21 October 2015

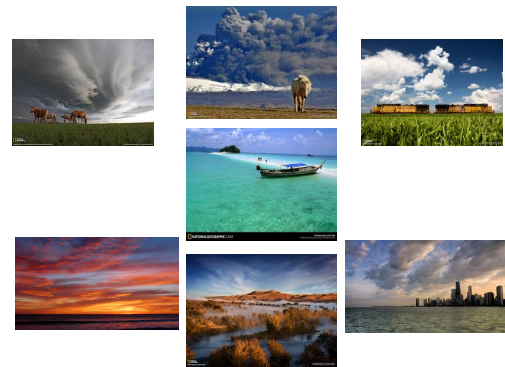


The *size* of objects
relative to other objects
and the frame
adds emphasis and
signals importance.

Michael G. Prais, Ph.D.

SLATE

21 October 2015



Michael G. Prais, Ph.D.

SLATE

21 October 2015

The division of space

adds emphasis and
signals importance.

Michael G. Prais, Ph.D.

SLATE

21 October 2015



Michael G. Prais, Ph.D.

SLATE

21 October 2015

HIGH ↑ *in the image*
in contrast to
low ↓ *in the image*
signals importance
by creating the illusion of
a **foreground** and a **background**.

Michael G. Prais, Ph.D.

SLATE

21 October 2015

Presented with
Foreground and **Background**,
a viewer stops to contemplate



their relationship.

Michael G. Prais, Ph.D.

SLATE

21 October 2015



Michael G. Prais, Ph.D.

SLATE

21 October 2015

Obscurity signals importance
by creating the illusion of
a **foreground**
and a **background**.

Michael G. Prais, Ph.D.

SLATE

21 October 2015



Michael G. Prais, Ph.D.

SLATE

21 October 2015

signals importance.
adds emphasis and
Perspective (lines and sizes)

Michael G. Prais, Ph.D.

SLATE

21 October 2015

Draw Attention with Placement

- Relative Size - Objects and Frame
- Division of Space
- Lower in Frame – Higher in Frame
- Obscurity - Background – Foreground
- Perspective – Lines and Sizes (Spaces)
- Balance - Gravity

Michael G. Prais, Ph.D.

SLATE

21 October 2015

What other graphic tools can
you use to identify, separate,
and emphasize importance?

Michael G. Prais, Ph.D.

SLATE

21 October 2015

Of course, an unexpected variation gets attention, too.

Michael G. Prais, Ph.D. SLATE 21 October 2015

So, what did you learn today?

Michael G. Prais, Ph.D. SLATE 21 October 2015

How to Engage your Students

- Engage students in your presentations by emphasizing and differentiating that which is important with graphics.
- Use graphic design to garner attention, to emphasize importance, and *to anchor what you have to say*.
- It's not what is important for the test--rather what is interesting and important to you in retaining, understanding, and applying the subject matter.

Michael G. Prais, Ph.D. SLATE 21 October 2015

How to *Disengage* your Students

- Engage students in your presentations by emphasizing and differentiating that which is important with graphics.
- Use graphic design to garner attention, to emphasize importance, and *to anchor what you have to say*.
- It's not what is important for the test--rather what is interesting and important to you in retaining, understanding, and applying the subject matter.

Michael G. Prais, Ph.D. SLATE 21 October 2015

Engage Your Students

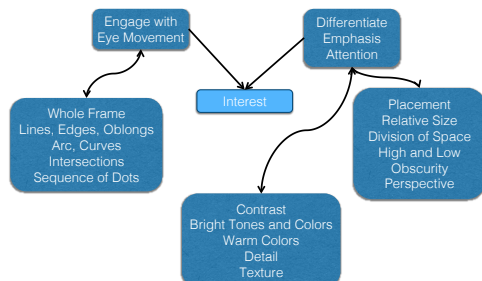
Michael G. Prais, Ph.D. SLATE 21 October 2015

Specifics to Remember

- Anchor Presentations with Attractive Images.
- Use Placement to Draw Attention.
- Lines, Nodes, and Intersections Retain Interest.
- Use Contrast to Identify and Emphasize Information.

Michael G. Prais, Ph.D. SLATE 21 October 2015

Specifics to Remember



Michael G. Prais, Ph.D.

SLATE

21 October 2015

Interested?

Michael G. Prais, Ph.D.

SLATE

21 October 2015

Engaged?

Michael G. Prais, Ph.D.

SLATE

21 October 2015

Want more?

- Nancy Duarte, *slide:ology*
- Garr Reynolds, *Presentation Zen*
- Nancy Duarte, *Resonate*
- Garr Reynolds, *The Naker Presenter*
- Garr Reynolds, *Presentation Zen Design*
- Edward Tufte, *Visual Explanations*

Michael G. Prais, Ph.D.

SLATE

21 October 2015

Images are publically available from
the National Geographic Society at
<http://nationalgeographic.com>

Michael G. Prais, Ph.D.

SLATE

21 October 2015

⁸⁴PowerPoint ⁵⁹Presentations:
³⁵Breaking ⁵⁶Bad

Michael G. Prais, Ph.D.
Instructional and Communication Technologies
Consulting and Training
<http://michaelprais.me>
michael@michaelprais.me

Michael G. Prais, Ph.D.

SLATE

21 October 2015

Questions?

Michael G. Prais, Ph.D.

SLATE

21 October 2015

Thanks for your
Attention!

Michael G. Prais, Ph.D.

SLATE

21 October 2015

⁸⁴PowerPoint ⁵⁹Presentations:
³⁵Breaking ⁵⁶Bad

Michael G. Prais, Ph.D.
Instructional and Communication Technologies
Consulting and Training
<http://michaelprais.me>
michael@michaelprais.me

Michael G. Prais, Ph.D.

SLATE

21 October 2015